

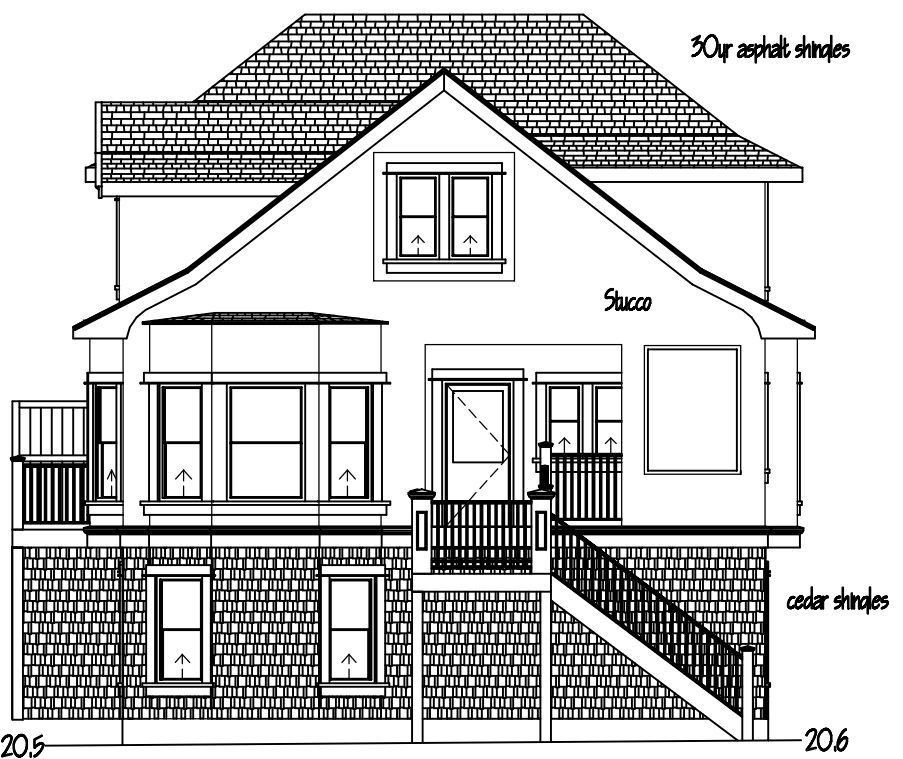


South



West

existing slab height 20.25  
proposed slab height 20.8



North



East

COSTER  
CONSTRUCTION  
& DESIGN  
208-2630 COOK ST.  
905-0222  
VICTORIA B.C.

DATE	June 28, 06
DRWG NO.	063
SHEET NO.	4 of 6
SCALE	1/8" = 1'
DRAWN BY	djc
APPROVED	

833 Princess